



杰夫微电子

超低功耗电源能效专家

2024.03

Confidentiality Requested

www.glfipower.cn



第一部分



关于公司



公司简介



杰夫微电子（四川）有限公司（简称GLF）于2016年在四川成都成立。公司专注于电源管理芯片产品的创新研发，致力于向消费类电子产品、智能物联网、泛工业应用、汽车电子等应用领域提供超低功耗、高精度电源保护IC产品。公司将持续秉持超低功耗、差异化、系列化的产品设计理念，不断拓展新产品线，以先进的技术、一流的产品、稳定的供货服务于全球客户。

50%

研发人员
占比50%

100+

公司芯片产品
达100余颗

数亿

累计出货量
达数亿颗

超低功耗技术行业领先



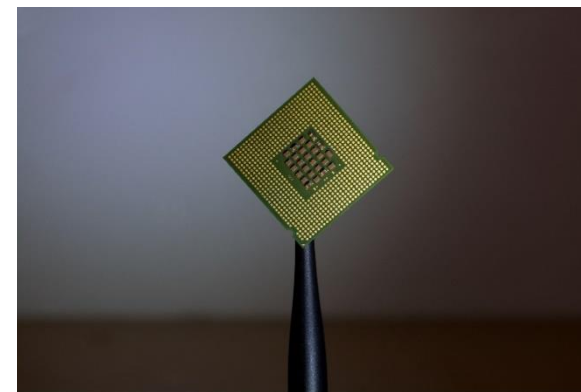
- ◆ 2016年发布**全世界第一家nA级别**超低功耗负载开关，产品遵循超低功耗节能设计理念。
- ◆ 产品已大量应用于**消费、工业**等市场，未来持续开拓**医疗、汽车、AI**等领域。

全球化运营/销售网络



- ◆ 已成功进入多家**国内外世界知名客户** – 亚马逊、谷歌、歌尔声学、小米、华为 ...
- ◆ 建立了**独特的供应链体系**，能够满足国内外客户需求。

团队行业经验丰富



- ◆ 公司创始团队均来自仙童半导体，核心技术团队在半导体领域积累了丰富的实践经验，拥有丰富的**大规模集成电路运营经验**。
- ◆ 国际化研发团队，**引领行业开拓创新**。

发展历程



获得“高新技术企业”认证
进入智能穿戴市场

工业级中高压产品发布
进入工业应用市场

完成团队组建
完善生产线运营体系

2019

2021

2017

2020

2023

2016

2018

2022

杰夫微公司成立

进入NB-IOT市场
产品量产

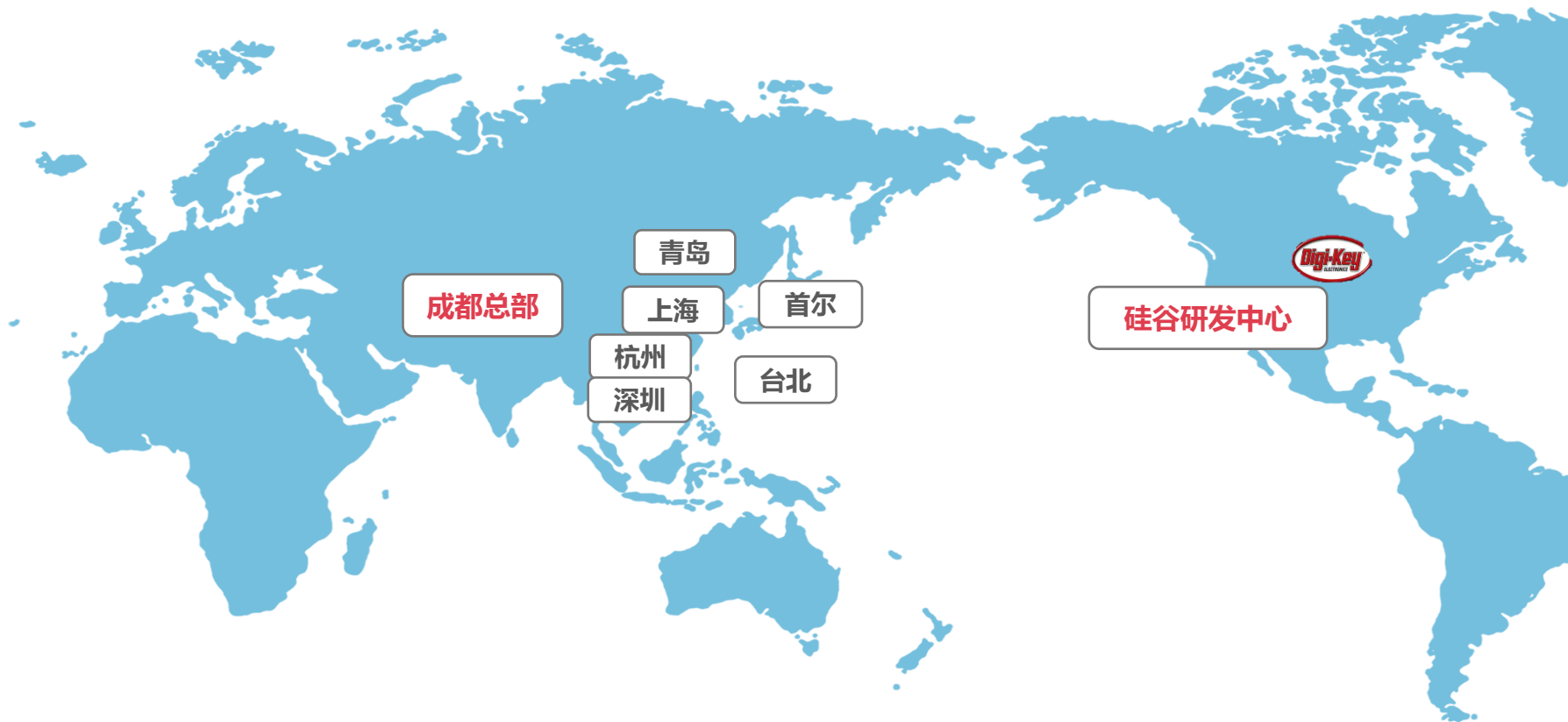
新增多条产品线
上线美国Digi-Key平台

车规级产品发布
进入汽车电子市场
丰富产品线

进入AI及智慧医疗
应用市场



公司布局



部分办公地址:

成都

四川省成都市高新区万象南路669号佳辰国际中心1501

深圳

深圳市南山区粤海街道高新南九道深圳湾科技生态园第9A栋2807

美国

5201 Great America Pkwy, Suite 355
Santa Clara, CA95054

韩国

37, Baengnyeonsan-ro, Eunpyeong-gu
Seoul, Korea

目标市场



消费电子

- 智能穿戴
- 智能家居
- 智能手机
- 笔记本电脑
- 平板电脑
- 电子书



智慧医疗

- 助听器
- 植入式医疗设备
- 健康侦测设备



工业应用

- SSD
- 智能表计
- 网关
- 数据中心
- AIoT设备
- 通信模块 (NB-IoT、4G CAT1、光模块、有源铜缆ACC)



汽车电子

- 信息娱乐系统
- 通讯系统 (CPE/网关)
- ADAS
- 智能座舱
- 车门人脸识别

主要客户



公司荣誉



资质荣誉



知识产权



行业报道



高新技术企业
ISO9001质量认证
ISO14001质量认证
四川省专精特新企业
四川省科技型中小企业

... ..



多项核心技术知识产权
创立IoSmart™产品系列
全球领先的设计理念

... ..



上线北美最大行业交易平台Digi-Key
APEC曾将“GLF71311”誉为电源设计者必须
知晓的十大最强创新设计之一
EDN(美国) 2018最热门电子产品
旅美科技协会2019全球创新峰会产品创新奖

... ..

质量保证

质量方针

核心技术 卓越品质

精益管理 诚信满意

GLF按照行业内高标准质量要求进行产品的生产制造，并向客户提供最真挚的服务。

环保信息

GLF遵守有关 IC 产品中受限化学品和材料 (RCM) 的规则或法规。

GLF管理一级供应商、成品组成材料的内部制造流程、数据收集、适当的测试和报告、管理评审以及最新立法要求和客户要求。





第二部分

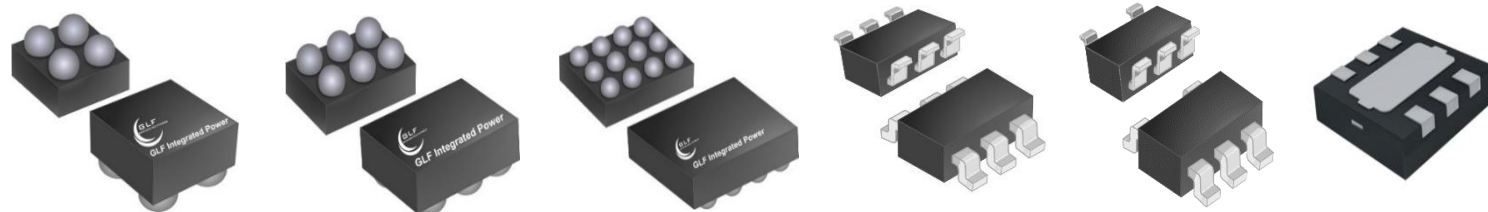


关于产品

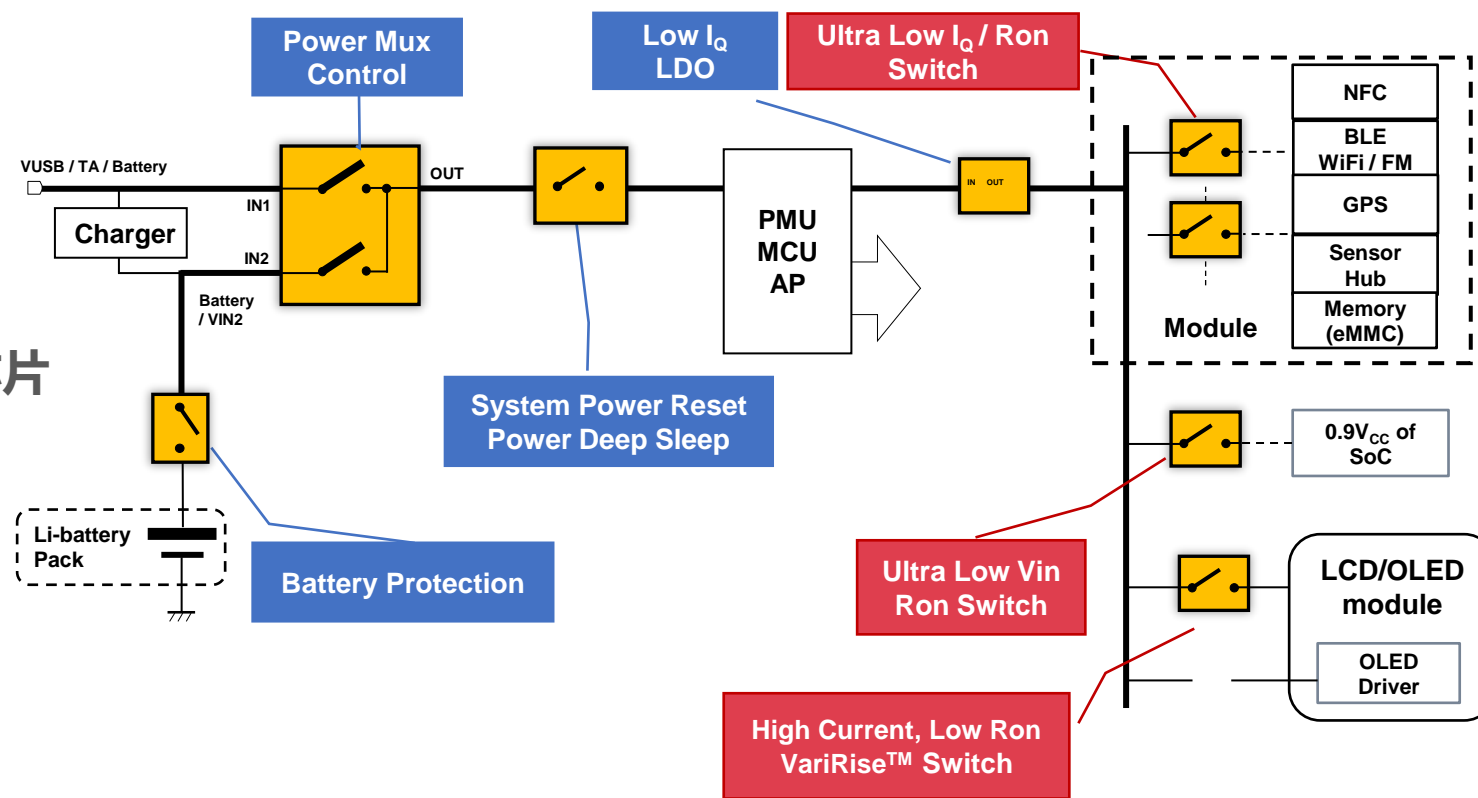




产品线



- ▶ 集成式电源负载开关
- ▶ 电源路径转换芯片
- ▶ 过流保护电源芯片
- ▶ 锂电池保护芯片
- ▶ 系统电源复位和深度睡眠芯片
- ▶ 线性稳压器
- ▶ DC-DC开关稳压器
- ▶ 车规级电源负载开关





产品列表



集成式电源负载开关 (01) Integrated Power Load Switch 01

Product Type	Product Name	V _{IN} Min. Voltage [V]	V _{IN} Max. Voltage [V]	I _{OUT} Rating [A]	R _{ON} Typ. @ V _{IN} Max [mΩ]	I _Q Typ. @ V _{IN} Max [nA]	I _{SD} Typ. @ V _{IN} Max [nA]	Slew Rate Control	Rise Time t _R Typ. [μs]	EN Active	Output Discharge [Ω]	Reverse Current Blocking	ESD [kV]	Operating Temperature [°C]	Package Type							
Nano-Current Consumed	GLF71300	1.1	5.5	2	34	1	19	√	430	H	NA	NA	HBM : 6 CDM : 2	- 40 ~ 85	CSP 0.77 x 0.77 x 0.46							
	GLF71301					1				H	85			- 40 ~ 105								
	GLF71301H					1				H	85			- 40 ~ 105								
	GLF71302					0.54 μA				L	NA			- 40 ~ 105								
	GLF71303					0.54 μA				L	85			- 40 ~ 105								
	GLF71306					1				H	NA			- 40 ~ 105								
	GLF71308	1		H	85	- 40 ~ 105																
	GLF71305	1.5		3	22	340	H		85	- 40 ~ 85												
	GLF71307	1		19	9	H	85		- 40 ~ 85													
	GLF71310	1.1		2	31	7	28		√	335	H			NA		NA	HBM : 6 CDM : 2	- 40 ~ 105	CSP 0.97 x 0.97 x 0.55			
	GLF71311					H					85											
	GLF71313					0.52 μA					L			85								
	GLF71315					7					H			85								
	GLF71511	2		25	7	28	√		2.2 ms	H	85			- 40 ~ 105								
	GLF71320	1.1		4	15	3	50		√	400	H			NA		NA	HBM : 6 CDM : 2	- 40 ~ 85	CSP 0.97 x 1.47 x 0.55			
	GLF71321					3					50			√						400	H	80
	GLF71322					570					40			√						400	L	NA
	GLF71323					570					40			√						400	L	80
GLF71325	4	18 @ 3.3 V	1 @ 3.3 V	16 @ 3.3 V	√	2.2 ms	H	85	- 40 ~ 105													



产品列表



集成式电源负载开关 (02) Integrated Power Load Switch 02

Product Type	Product Name	V _{IN} Min. Voltage [V]	V _{IN} Max. Voltage [V]	I _{OUT} Rating [A]	R _{ON} Typ. @ V _{IN} Max [mΩ]	I _Q Typ. @ V _{IN} Max [nA]	I _{SD} Typ. @ V _{IN} Max [nA]	Slew Rate Control	Rise Time t _R Typ. [us]	EN Active	Output Discharge [Ω]	Reverse Current Blocking	ESD [kV]	Operating Temperature [°C]	Package Type
Nano-Current Consumption	GLF71301T	1.1	5.5	2	34	1	19	√	430	H	85	NA	HBM : 6 CDM : 2	- 40 ~ 85	CSP 0.77 x 0.77 x 0.35
	GLF71311T			2	31	7	28	√	335	H	85				CSP 0.97 x 0.97 x 0.35
	GLF1100			2	82	5	25	√	2.2 ms	H	85				SOT23-5L
	GLF1110	1.5	5.5	2	54	2	13	√	600	H	NA		HBM : 4 CDM : 2		
	GLF1111			2	54	2	13	√	600	H	85				
	GLF1110H	1.5	5.5	2	54	2	13	√	600	H	NA		HBM : 4 CDM : 2	- 40 ~ 105	
	GLF1111H			2	54	2	13	√	600	H	85				
	GLF81311	2	6.5	3	41	10	20	√	2.3 ms	H	560		HBM : 6 CDM : 2	- 40 ~ 85	
	GLF1120H	1.1	5.5	1	52	5	10	√	380	H	NA		HBM : 3 CDM : 2		
	GLF1121H					5		√		H	85				
	GLF1121HN					5		√		H	85				
	GLF1121L					550		√		L	85				
GLF1123H	5					√		H		85					
Prog. Long t _R of V _{OUT}	GLF71430	1.5	5.5	7	10	10	10	Prog.	up to 34 ms	H	NA	HBM : 8 CDM : 2	- 40 ~ 85	CSP 1.27 x 1.67 x 0.55	
	GLF71431	1.5	5.5	7	10	10	55	Prog.	up to 34 ms	H	85				
2 Channel	GLF1411	1.5	5.5	1	180	10	32	√	390 @ SR= High 45 @ SR= GND	H	95	HBM : 5 CDM : 2	- 40 ~ 85	DFN 1.5 x 1.5 -8L	
	GLF1421	1.5	5.5	1	175	440	20	√	465 @ SR= High 50 @ SR= GND	H	95			√	DFN 1.5 x 1.5 -8L
3 Channel	GLF78131 / T	1.1	5.5	1.5	60	6	23	√	500	H	235	NA	HBM : 6 CDM : 2	- 40 ~ 85	CSP 1.27 x 1.67 x 0.55/ T0.35



产品列表



集成式电源负载开关 (03) Integrated Power Load Switch 03

Product Type	Product Name	V _{IN} Min. Voltage [V]	V _{IN} Max. Voltage [V]	I _{OUT} Rating [A]	R _{ON} Typ. @ V _{IN} Max [mΩ]	I _Q Typ. @ V _{IN} Max [nA]	I _{SD} Typ. @ V _{IN} Max [nA]	Slew Rate Control	Rise Time t _R Typ. [us]	EN Active	Output Discharge [Ω]	Reverse Current Blocking	ESD [kV]	Operating Temperature [°C]	Package Type
True Reverse Current Blocking	GLF72100	1.5	5.5	2	37	0.45 uA	20	√	570	H	NA	√	HBM : 4 CDM : 2		CSP 0.77 x 0.77 x 0.46
	GLF72101			2	37	0.45 uA	20	√	570	H	85				
	GLF72102*			2	37	0.45 uA	20	√	570	L	NA				
	GLF72103			2	37	0.45 uA	20	√	48	H	85				
	GLF72105			2	37	0.45 uA	20	√	570	L	85				
	GLF72110			3	29	1.4 uA	24	√	1.2 ms	H	NA				
	GLF72111			3	29	1.4 uA	24	√	1.2 ms	H	85		-40 ~ 125	CSP 0.97 x 0.97 x 0.55	
	GLF72112			3	29	1.4 uA	24	√	18 us	H	NA		HBM : 6 CDM : 2	-40 ~ 85	SOT23-5L
	GLF72120			4	14	1.3 uA	56	√	730	H	NA				
	GLF72122			4	14	1.3 uA	56	√	2000	H	NA				
	GLF1200-T1G7			2	54	0.47 uA	13	√	600	H	NA				
	GLF1201-T1G7			2	54	0.47 uA	13	√	600	H	85		-40 ~ 105		
	GLF1200H-T1G7			2	54	0.47 uA	13	√	600	H	NA		HBM : 3 CDM : 2	-40 ~ 85	CSP 0.67 x 0.67 x 0.425
	GLF1201H-T1G7			2	54	0.47 uA	13	√	600	H	85				
	GLF82321	2	6.5	2	40	1.6 uA	20	√	2.6 ms	H	550				
	GLF1220H	1.5	5.5	1	52	500	10	√	390	H	NA	HBM : 3 CDM : 2	-40 ~ 85	CSP 1.27 x 1.67 x 0.55	
GLF1221H	1.5	1		52	500	10	√	390	H	85					



产品列表



集成式电源负载开关 (04) Integrated Power Load Switch 04

Product Type	Product Name	V _{IN} Min. Voltage [V]	V _{IN} Max. Voltage [V]	I _{OUT} Rating [A]	R _{ON} Typ. @ V _{IN} Max [mΩ]	I _Q Typ. @ V _{IN} Max [nA]	I _{SD} Typ. @ V _{IN} Max [nA]	Slew Rate Control	Rise Time t _R Typ. [us]	EN Active	Output Discharge [Ω]	Reverse Current Blocking	ESD [kV]	Operating Temperature [°C]	Package Type
Ultra-Low V _{IN}	GLF72510	0.8	3.6	3	27	80 nA @ 1.2 V	6	√	420	H	NA	√**	HBM : 6 CDM : 2	- 40 ~ 85	CSP 0.97 x 0.97 x 0.55
	GLF72511					85					CSP 0.77 x 0.77 x 0.46				
	GLF72501			2	32	180 nA @ 1 V	630	√	390	H	85				CSP 0.97 x 1.47 x 0.55
	GLF72520			4	10	60 nA @ 0.8 V 6.5 uA @ 3.6 V	6.5	√	800	H	NA				CSP 0.97 x 1.47 x 0.55
	GLF72524	4	10	60 nA @ 0.8 V 6.5 uA @ 3.6 V	6.5	√	280	H	85	CSP 0.97 x 1.47 x 0.55					
	GLF1501	0.85	3	52	50 nA @ 0.85 V 30 uA @ 3.6 V	6	√	400	H	85	HBM : 4 CDM : 2	SOT23-5L			
	GLF72525	0.7	4	9	5.6 uA @ 0.7 V 8.8 uA @ 3.6 V	14	√	82	H	85	√	HBM : 8 CDM : 2	- 40 ~ 105	CSP 0.97 x 1.47 x 0.55	
	GLF1511	0.7	5.5	4	13	2 uA @ 0.7 V 30 uA @ 5.5 V	30	√	360	H	250	√**		CSP 0.97 x 1.47 x 0.55	
Ultra-Low V _{IN} (2 channel)	GLF1401	0.6	5.5	6	19	18 uA @ dual channel	8	√	1.97ms	H	200	NA	HBM : 4 CDM : 2	- 40 ~ 85	DFN 2 x 3 -14L
	GLF1403	0.6	5.5	6	19	15 uA @ single channel	8	√	1.00ms	H	200	NA			

*: On Request

** : Reverse Current Blocking Protection When Disabled



产品列表



电源路径转换芯片 Power Mux IC

Product Type	Product Name	V _{IN} Min. Voltage [V]	V _{IN} Max. Voltage [V]	I _{OUT} Rating [A]	R _{ON} Typ. @ V _{IN} Max [mΩ]	I _Q Typ. @ V _{IN} Max [μA]	I _{SD} Typ. @ V _{IN} Max [nA]	Slew Rate Control	Rise Time t _r Typ. [us]	V _{IN} Auto Select	V _{IN} Manual Selection	Output Discharge [Ω]	Reverse Current Blocking	Operating Temperature [°C]	Package Type
Power Mux	GLF74520	1.5	5.5	2.5	35	4	20	√	350	√	√	NA	√	-40 ~ 85	CSP 0.97 x 1.47 x 0.55
	GLF74130			4.5	20	4	50	√	790	√	√	NA	√		CSP 1.27 x 1.67 x 0.55
	GLF4001-T2G7			2	68	4	20	√	350	√	√	NA	√		SOT23-6L
	GLF74139	2.0	5.5	4.5	20	4	30	√	1 ms	√	√	NA	√		CSP 1.27 x 1.67 x 0.55
	GLF74138	2.0	5.5	4.5	20	4	30	√	573	√	√	NA	√		CSP 1.27 x 1.67 x 0.55
	GLF4020-T2G7	2.5	6.5	2	92	4	6	√	448	√	√	NA	√		SOT23-6L
	GLF4028-T2G7	2.5	5.5	2	97 @ 5.5 V 105 @ 4.5 V	3	5	√	340	√	√	NA	√		SOT23-6L

过流保护电源芯片 Current Limit Power Switch

Product Type	Product Name	V _{IN} Max. Voltage [V]	I _{OUT} Rating [A]	R _{ON} Typ. @ V _{IN} Max [mΩ]	I _Q Typ. @ V _{IN} Max [μA]	I _{SD} Typ. @ V _{IN} Max [nA]	I _{LIM} Current Limit [A]	Short Circuit Protection I _{SC} [A]	Reverse Current Blocking	EN Active	Output Discharge [Ω]	Thermal Shutdown [°C]	ESD [kV]	Operating Temperature [°C]	Package Type
Current Limit	GLF2310A-T1G7	5.5	2.6	56	20	50	40 mA ~2.2 A	6.6	√	H	NA	140	HBM : 8 CDM : 2	-40 ~ 85	SOT23-5L
	300										SOT23-5L				
	NA										SOT23-6L				
	300										SOT23-6L				
	300						SOT23-5L								
	300						SOT23-5L								
	300						SOT23-5L								
	300						SOT23-5L								
	300						SOT23-5L								
	300						SOT23-5L								
300	CSP 0.97 x 1.47 x 0.55														
GLF2311A-T1G7															
GLF2310A-T2G7															
GLF2311A-T2G7															
GLF2311B-T1G7						Fixed 2 A				L	300				
GLF2313B-T1G7										H	300				
GLF2321B-T1G7		1.8				Fixed 1.5 A	5.3			H	300				
GLF2331B-T1G7		2.6	53	18	35	Fixed 1.3 A	√			H	300				
GLF2351B-T1G7		2.8	40	17	60	Fixed 2.55 A	4.6			H	300				
GLF2351A-S3G7		3	32	19	63	40 mA~2.8 A	√			H	300				



产品列表



锂电池保护芯片 Battery Protection IC

Product Type	Product Name	V _{IN} Max. Voltage [V]	I _{OUT} Rating [A]	R _{ON} Typ. @ 4.2 V [mΩ]	R _{ON} Typ. @ 3.6 V [mΩ]	I _Q Typ. @ 4.2 V [uA]	I _Q Typ. @ 3.6 V [uA]	I _{SD} Typ. @ 2.5 V [nA]	Over Charge Protection V _{OC} [V]	Over Discharge Protection, V _{OD} [V]	Short Circuit Protection I _{SC} [A]	ON Voltage to V _{OUT} , V _{ON} [V]	V _{BAT} Min Charging [V]	Operating Temperature [°C]	Package Type
Battery Protection	GLF73510	5.5	2	28	30	0.73	0.51	2	NA	3.05	NA	3.5	0.4	-40 ~ 85	CSP 0.97 x 0.97 x 0.55
	GLF73710		1.5	30	31	0.70	0.65	35	NA	2.88	0.55	3.6			
	GLF73910-AD01		1.5	34	36	0.79	0.72	70	4.35	2.8	0.6	3.6			
	GLF73910-AD01C		1.5	34	36	0.79	0.72	70	4.35	2.8	0.6	3.6	0		
	GLF73910-BD01		1.5	34	36	0.79	0.72	70	4.50	2.8	0.6	3.6	0.4		
	GLF73911-AD01		1.5	34	36	0.79	0.72	35	4.35**	2.8	0.6	3.6			
	GLF73912		1.5	53	57	1	0.9	7	4.35	2.8	0.5	3.6			

Product Type	Product Name	I _{OUT} Rating [A]	R _{ON} Typ. @ 4.2 V [mΩ]	I _Q Typ. @ 3.6 V [uA]	I _{SD} Typ. @ 2.5 V [nA]	Over Charge Protection V _{OC} [V]	Over Discharge Protection, V _{OD} [V]	Over Charge Current I _{OC} [mA]	Over Discharge Current I _{DC} [mA]	Short Circuit Protection I _{SC} [mA]	ON Voltage to V _{OUT} , V _{ON} [V]	Shipping Mode	V _{BAT} Min Charging [V]	Operating Temperature [°C]	Package Type
Battery Protection with Shipping Mode	GLF73915-AD12C	1.5	53	0.9	7	4.35	2.8	300	NA	500	3.6	√	0	-40 ~ 85	CSP 0.97 x 0.97 x 0.55
Full Protection	GLF73610 -CE23C	1.5	62 @3.7 V	1.48 @3.7 V	8	4.45	2.8	330	76	250	3.6	√	0	-40 ~ 85	CSP 0.97 x 0.97 x 0.55
	GLF73610 -DE23C					4.275									
	GLF73610 -EE23C**					4.375									
	GLF73610 -FE23C**					4.425									
	GLF73610 -GE23C					4.475									
	GLF73610 -HE23C					4.525									



产品列表



系统电源复位和深度睡眠芯片 System Power Reset and Deep Sleep IC

Product Type	Product Name	V _{IN} Min. Voltage [V]	V _{IN} Max. Voltage [V]	I _{OUT} Rating [A]	R _{ON} Typ. @ 3.6 V [mΩ]	I _Q Typ. @ 3.6 V [nA]	I _{SD} Typ. @ 3.6 V [nA]	Output Discharge [Ω]	Slew Rate Control	Rise Time t _r Typ [ms]	On Delay Time by /SRO, t _{VON} [s]	On Delay Time by WAKE, t _{QON} [ms]	Off Delay Time, t _{Sly-Dly} [s]	Operating Temperature [°C]	Package Type
Power Deep Sleep	GLF76311	2.5	5.5	2	34	6	7	85	√	1	3	NA	6	- 40 ~ 85	CSP 0.97 x 0.97 x 0.55
	GLF76321 / T	1.5		2	31	3	7	85	√	1	1.3	0.8	7		CSP 0.97 x 1.47 x 0.55/0.35
	GLF76521 / T	1.8		2	31	3	7	85	√	1	0.3	0.8	1.8		

Product Type	Product Name	V _{IN} Min. Voltage [V]	V _{IN} Max. Voltage [V]	I _{OUT} Rating [A]	R _{ON} Typ. @ 3.6 V [mΩ]	I _Q Typ. @ 3.6 V [nA]	I _{SD} Typ. @ 3.6 V [nA]	Output Discharge [Ω]	Rise Time t _r Typ [ms]	On Delay Time by /SRO, t _{VON} [s]	On Delay Time by WAKE, t _{QON} [ms]	Off Delay Time, t _{Sly-Dly} [s]	Reset Duration, t _{Reset} [ms]	Operating Temperature [°C]	Package Type
Power Reset	GLF76121	2.5	5.5	2	34	3	7	85	1	1.5	0.9	6	750	- 40 ~ 85	CSP 0.97 x 1.47 x 0.55
	GLF76121S			2	34	3	7	85	1	1.5	0.9	3.0	360		
	GLF76121L			2	34	3	7	85	1	1.5	0.9	12	750		
	GLF76431	1.8	5.5	6	19	0.42 uA	0.36 uA	90	1	0.8 ms	0.8	7.5	470	CSP 1.27 x 1.67 x 0.55	

线性稳压器 Linear Regulator

Product Type	Product Name	V _{IN} Max. Voltage [V]	V _{OUT} Voltage [V]	V _{OUT} Accuracy [%]	Line Regulation [%/V]	Load Regulation [%/mA]	I _{OUT} Rating [mA]	Dropout [V]	Short Circuit [mA]	I _Q Typ. @ No load [uA]	I _{SD} Typ. [nA]	EN Pin	ESD [kV]	Operating Temperature [°C]	Package Type
Linear Regulator	GLF9011-18	5.5	1.8	2.5	0.16	0.002	150	52	250	0.4	4	H	HBM : 6 CDM : 2	- 40 ~ 85	CSP 0.97 x 0.97 x 0.55
	GLF9011-28		2.8	2.5	0.16	0.002	150	60	250	0.4	4	H			
	GLF9011-30		3.0	2.5	0.1	0.002	150	62	250	0.4	4	H			

产品列表



DC-DC开关稳压器 DC-DC Switching Regulator

Product Type	Product Name	V _{IN} Min. Voltage [V]	V _{IN} Max. Voltage [V]	V _{OUT} Min. Voltage [V]	V _{OUT} Max. Voltage [V]	I _{OUT} [A]	I _Q Typ. [uA]	Switching Frequency [Mhz]	RON Typ. High Side [mΩ]	RON Typ. Low Side [mΩ]	PSM/Forced PWM	Power Good	Features	Operating Temperature [°C]	Package Type
DCDC	GLF8114-Q3G13	2.5	5.5	0.6	5.5	4.0	21.0	1.3	75.0	57.0	PSM	√	TSD, Cycle by cycle current	- 40 ~ 85	QFN 3 x 3 - 16L

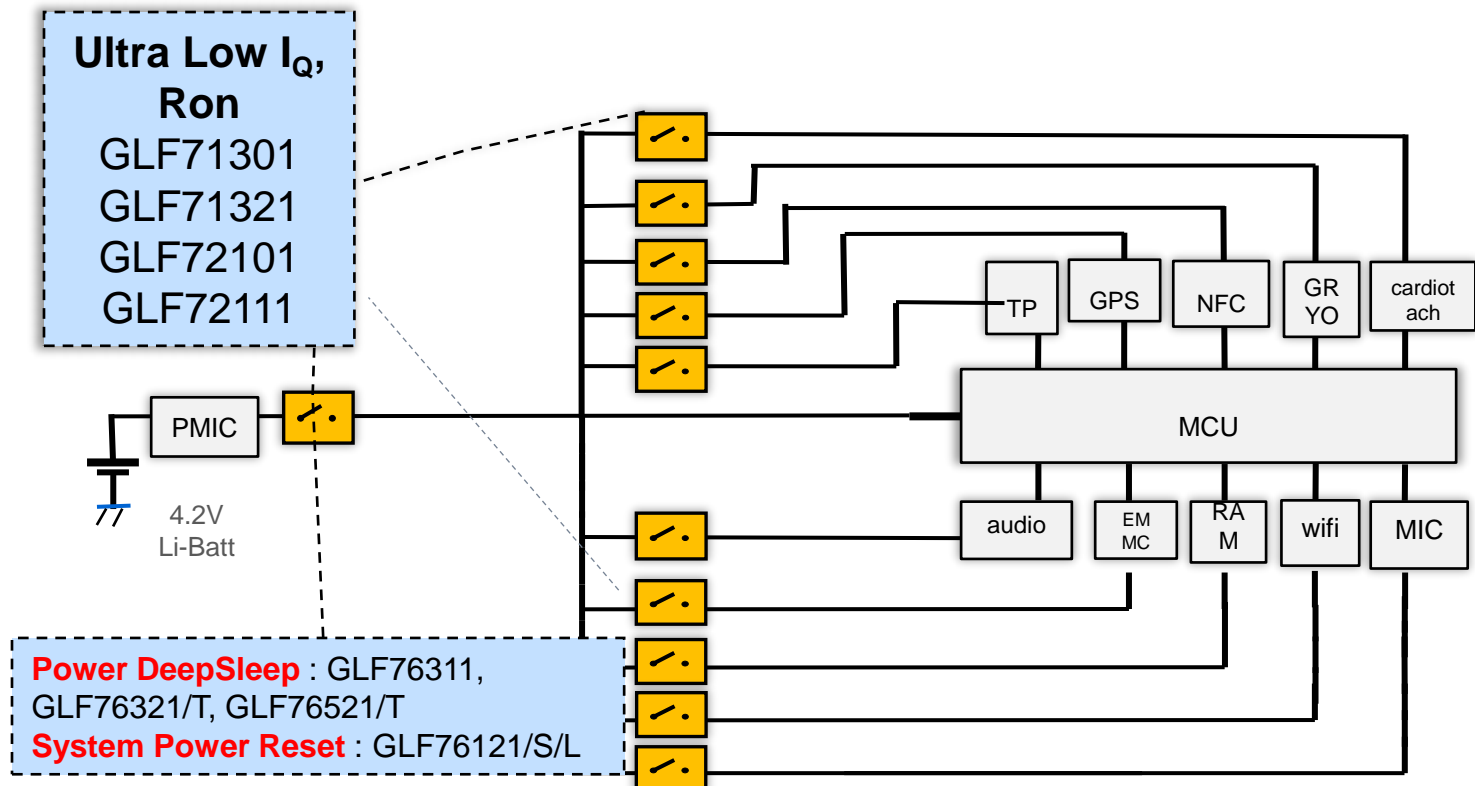
车规级电源负载开关 Automotive - Integrated Power Load Switch

Product Type	Product Name	V _{IN} Min. Voltage [V]	V _{IN} Max. Voltage [V]	I _{OUT} Rating [A]	RON Typ. @ V _{IN} Max [mΩ]	I _Q Typ. @ V _{IN} Max [nA]	I _{SD} Typ. @ V _{IN} Max [nA]	Slew Rate Control	Rise Time t _R Typ. [us]	EN Active	Output Discharge [Ω]	Reverse Current Blocking	ESD [kV]	Operating Temperature [°C]	Package Type
Nano-Current Consumed	GLF1111Q-T1G7	1.5	5.5	2	60	2	13	√	400	H	85	NA	HBM : 4 CDM : 2	- 40 ~ 125	SOT23-5L
	GLF1110Q-T1G7	1.5	5.5	2	60	2	13	√	400	H	NA	NA			SOT23-5L
True Reverse Current Blocking	GLF1200Q-T1G7	1.5	5.5	2	60	480	25	√	600	H	NA	√			SOT23-5L
	GLF1201Q-T1G7	1.5	5.5	2	60	480	25	√	600	H	85	√			SOT23-5L

应用案例 - 智能手表/手环

PowerSwitch I_QSmart™ Advantages

- Ultra Low Leakage at Standby & Operation
- Best in Class R_{ON}
- Ultra Small Packages

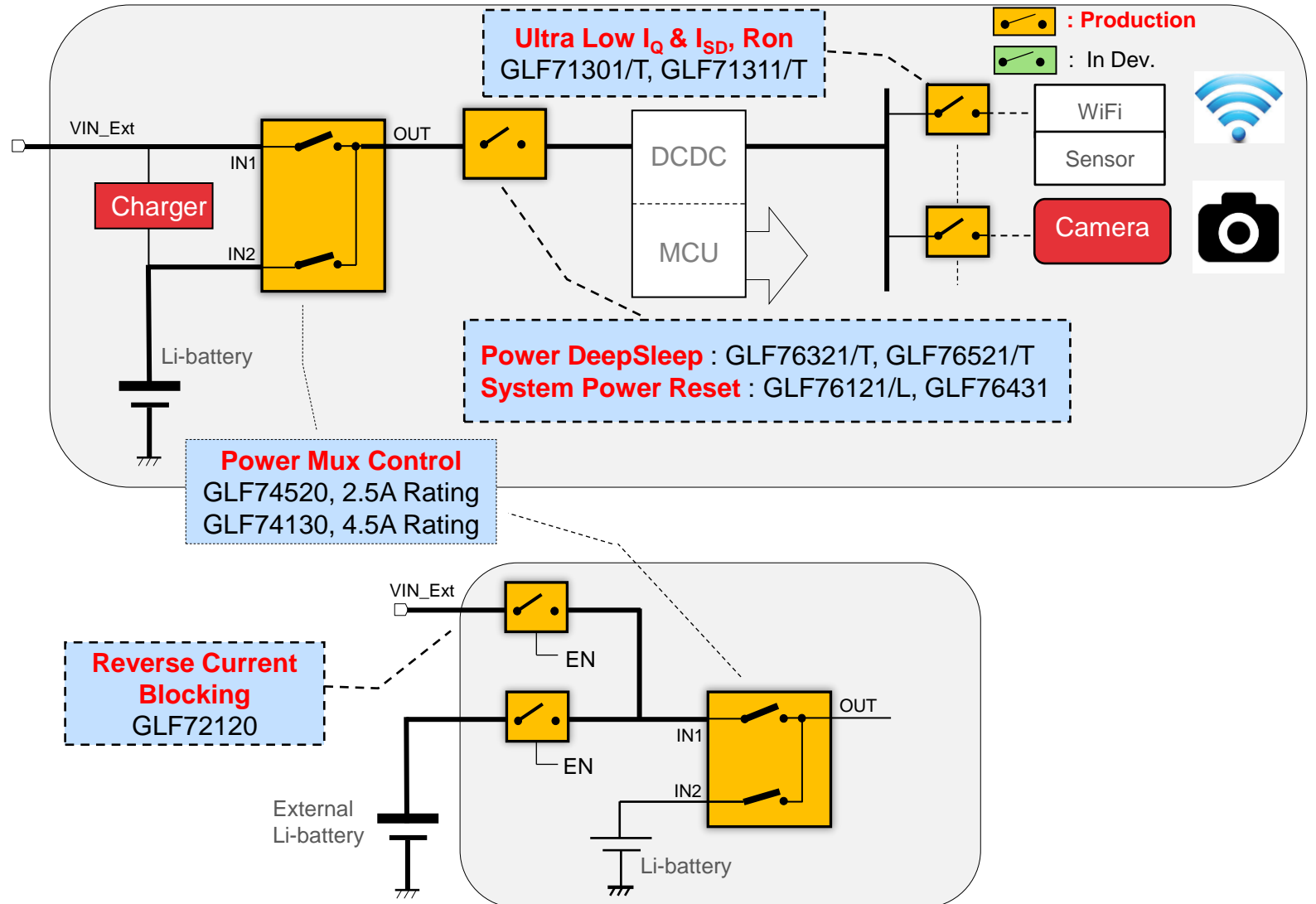
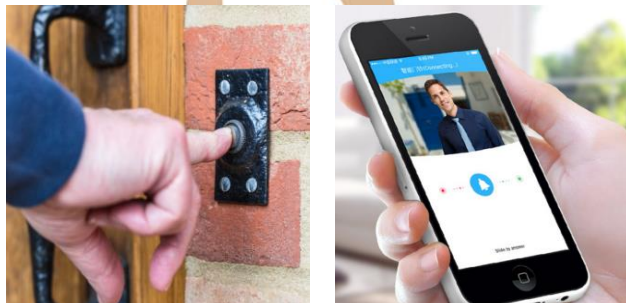




应用案例 - 智能门铃/门锁

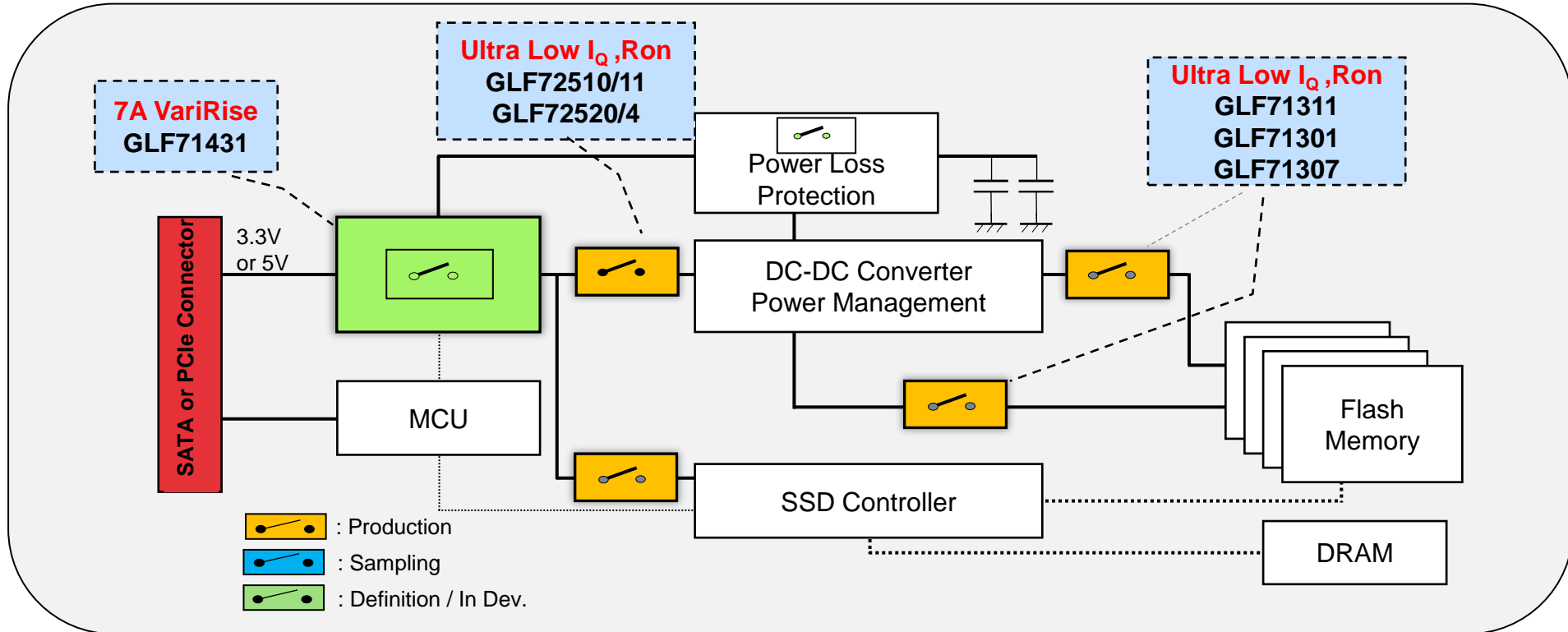
PowerSwitch I_QSmart™ Advantages

- Ultra Low Leakage at Standby & Operation
- Best in Class R_{ON}
- Ultra Small Packages





应用案例-SSD



PowerSwitch I_Q Smart™ Advantage:

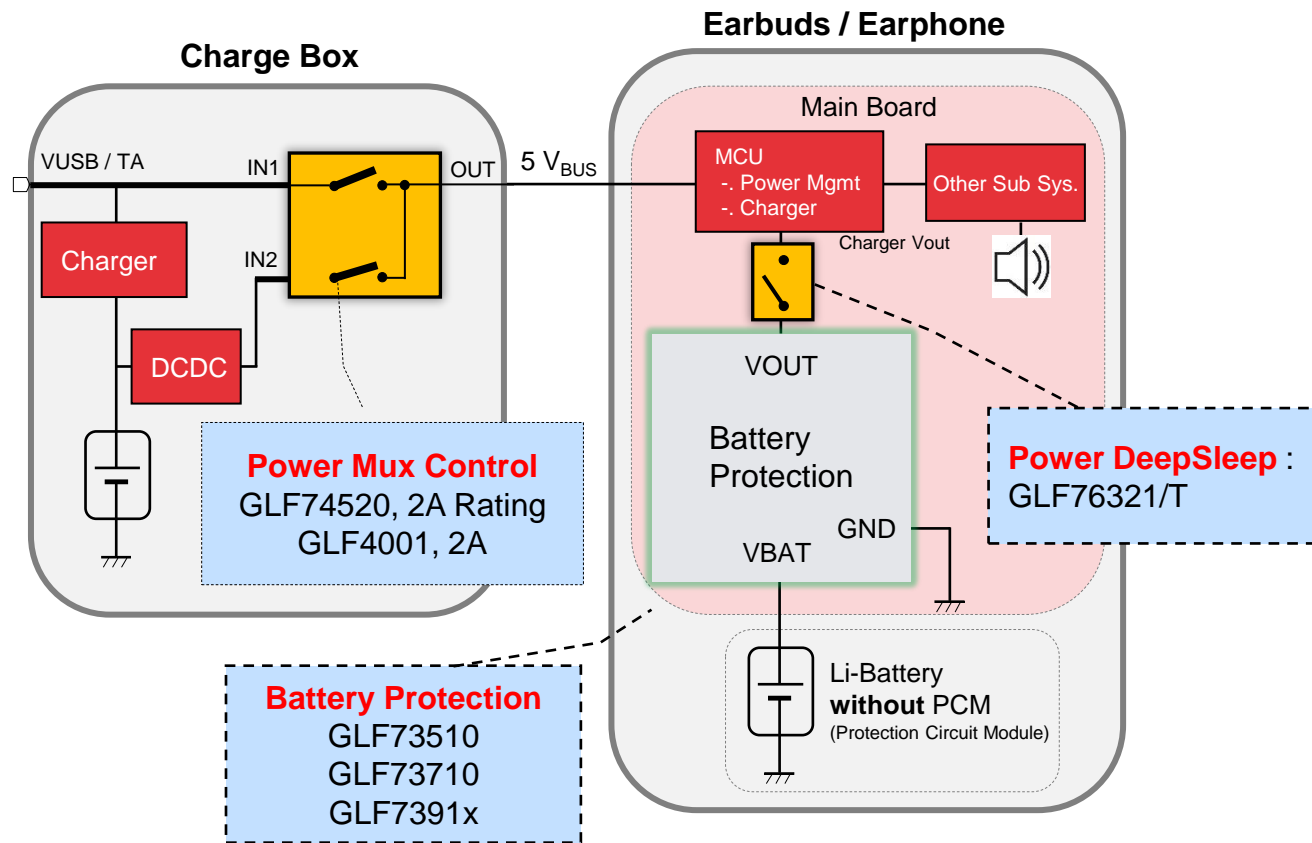
- Efficiency & Size for compact SSD size
- Manage the main power rail efficiently
- Protect power failure conditions for data safety



应用案例-TWS耳机

PowerSwitch I_{Q} Smart™ Advantages

- Ultra Low Leakage at Standby & Operation
- Best in Class R_{ON}
- Ultra Small Packages



Unique features:

- Device is NOT turned on and charging and discharging is not allowed when connecting a battery cell to GLF73xxx.
- Save PCB area by removing external components



杰夫微电子（四川）有限公司

Jiefu Microelectronics (Sichuan) Ltd.

Tel: 028-64109903

Web: www.glfipower.cn

Add: 四川省成都市高新区万象南路669号佳辰国际中心

